

St Helena's Church of England Primary School

*It is our responsibility to learn and achieve our dreams as a family.
Opening minds, widening horizons and developing a better world.*

Valuing Community, Compassion, Endurance, Friendship, Hope, Respect, Thankfulness, Wisdom

Low-level Concerns Policy

Rationale

This policy should be read in conjunction with the School's Safeguarding Policy and Procedures, Staff Code of Conduct and Whistleblowing Policy, to enable staff to share their concerns, no matter how small, about their own or another member of staff's behaviour.

The purpose of the policy is to create and embed a culture of openness, trust and transparency in which the clear values and expected behaviour which are set out in the school's Code of Conduct are constantly lived, monitored and reinforced by all staff. The school deals with all concerns about adults working in or behalf of the school appropriately and promptly.

Introduction

This policy seeks to

- ensure that staff are clear about, and confident to distinguish between, expected and appropriate behaviour from concerning, problematic or inappropriate behaviour – in themselves and others, and the delineation of professional boundaries and reporting lines
- empower staff to share any low-level concerns with the Headteacher
- help staff address unprofessional behaviour and help the individual to correct such behaviour at an early stage
- identify concerning, problematic or inappropriate behaviour – including any patterns – that may need to be consulted upon with (on a no-names basis if appropriate), or referred to, the LADO
- provide for responsive, sensitive and proportionate handling of such concerns when they are raised
- help identify any weaknesses in the organisation's safeguarding system.

Keeping Children Safe in Education September 2023

The following is taken from Keeping Children Safe in Education September 2023:

424. As part of their whole school or college approach to safeguarding, schools and colleges should ensure that they promote an open and transparent culture in which all concerns about all adults working in or on behalf of the school or college (including supply teachers, volunteers and contractors) are dealt with promptly and appropriately.

425. Creating a culture in which all concerns about adults are shared responsibly and with the right person, recorded and dealt with appropriately, is critical. If implemented correctly, this should:

- *enable schools and colleges to identify inappropriate, problematic or concerning behaviour early*
- *minimise the risk of abuse*
- *ensure that adults working in or on behalf of the school or college are clear about professional boundaries and act within these boundaries, and in accordance with the ethos and values of the institution.*

What is a low-level concern?

426. The term 'low-level' concern does not mean that it is insignificant. A low-level concern is any concern – no matter how small, and even if no more than causing a sense of unease or a 'nagging doubt' – that an adult working in or on behalf of the school or college may have acted in a way that:

- *is inconsistent with the staff code of conduct, including inappropriate conduct outside of work and*
- *does not meet the harm threshold or is otherwise not serious enough to consider a referral to the LADO.*

Examples of such behaviour could include, but are not limited to:

- *being over friendly with children*
- *having favourites*
- *taking photographs of children on their mobile phone, contrary to school policy*
- *engaging with a child on a one-to-one basis in a secluded area or behind a closed door, or*
- *humiliating children.*

427. *Such behaviour can exist on a wide spectrum, from the inadvertent or thoughtless, or behaviour that may look to be inappropriate, but might not be in specific circumstances, through to that which is ultimately intended to enable abuse.*

428. *Low-level concerns may arise in several ways and from a number of sources. For example: suspicion; complaint; or disclosure made by a child, parent or other adult within or outside of the organisation; or as a result of vetting checks undertaken.*

429. *It is crucial that all low-level concerns are shared responsibly with the right person and recorded and dealt with appropriately. Ensuring they are dealt with effectively should also protect those working in or on behalf of schools and colleges from becoming the subject of potential false low-level concerns or misunderstandings.*

Responsibilities of staff

It is important that **all** staff are clear of the expectations the school stipulates from them as contained in the Staff Code of Conduct.

It is crucial that **any** concerns in relation to a staff member's behaviour, including those which do not meet the harm threshold, are shared responsibly and with the Head Teacher. This should be done without delay. Where there are concerns/allegations about the Head Teacher, this should be referred to the Chair of Governors (whose contact details can be found in the School's Safeguarding Policy document).

The school seeks to create an environment where staff are encouraged and feel confident to self-refer, where, for example, they have found themselves in a situation which could be misinterpreted, might appear compromising to others, and/or on reflection they believe they have behaved in such a way that they consider falls below expected professional standards.

Clarity around Allegation vs Low-Level Concern vs Appropriate Conduct

Allegation:

Behaviour that indicates that an adult who works with children has:

- Behaved in a way that has harmed a child, or that may harm a child;
- Possibly committed a criminal offence against, or in relation to a child;
- Behaved towards a child or children that indicates that may pose a risk of harm to children.

Low-level concern:

Any concern, no matter how small – even if no more than a “nagging doubt”- that an adult may have acted in a manner which:

- Is not consistent with an organisation's Code of Conduct, and/or
- Relates to their conduct outside of work which, even if not linked to a particular act or omission, has caused a sense of unease about that adult's suitability to work with children.

Appropriate Conduct:

Behaviour that is entirely consistent with the organisation's Code of Conduct, and the law.

Storing and use of Low-Level Concerns and follow-up information

LLC recording forms and follow-up information will be stored securely within the school's safeguarding systems, with access only by the leadership team. This will be stored in accordance with the school's GDPR and data protection policies.

The staff member(s) reporting the concern must keep the information confidential and not share the concern with others apart from the Head Teacher or those aware in the senior leadership team.

Low-Level Concerns will not be referred to in references unless they have been formalised into more significant concerns resulting in disciplinary or misconduct procedures.

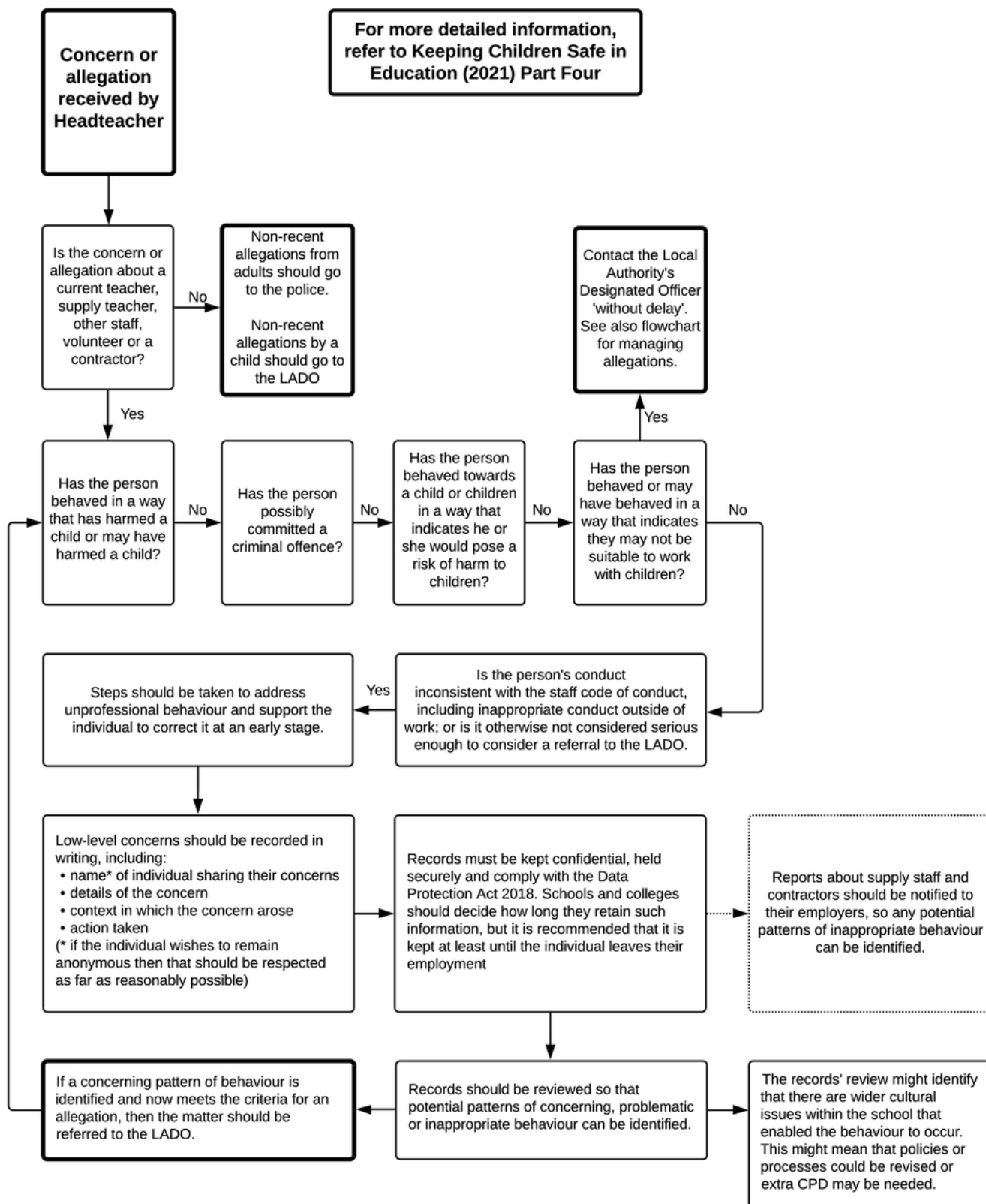
Whenever staff leave, any record of low-level concerns which are stored about them will be reviewed as to whether or not that information needs to be kept. Consideration will be given to:

(a) whether some or all of the information contained within any record may have any reasonably likely value in terms of any potential historic employment or abuse claim so as to justify keeping it, in line with normal safeguarding records practice; or

(b) if, on balance, any record is not considered to have any reasonably likely value, still less actionable concern, and ought to be deleted accordingly.

This policy will be reviewed annually or sooner if the LA or DFE deems it necessary.

Process to follow when a Low-Level Concern is raised



What is a low level concern?

The term 'low-level' concern does not mean that it is insignificant, it means that the behaviour towards a child does not meet the threshold set out at KCSIE (2021) paragraph 338. A low-level concern is any concern – no matter how small, and even if no more than causing a sense of unease or a 'nagging doubt' - that an adult working in or on behalf of the school or college may have acted in a way that:

- is inconsistent with the staff code of conduct, including inappropriate conduct outside of work; and
- does not meet the allegations threshold or is otherwise not considered serious enough to consider a referral to the LADO.